

Resource Data

Q1 Monthly Breakdown	Apr-20			May-20			Jun-20		
	Short Term	Long Term	Overall %	Short Term	Long Term	Overall %	Short Term	Long Term	Overall %
% Sickness Absence	0.14	4.97	5.12	0.04	4.59	4.62	0.35	4.37	4.72
Inclusion & Additional Learning Needs	1.13	1.61	2.74	1.65	2.23	3.88	0.00	2.25	2.25
Early Years	0.00	0.26	0.26	0.40	0.22	0.62	1.65	1.88	3.53
Youth Services	0.00	2.65	2.65	0.00	2.77	2.77	0.00	2.01	2.01
School Improvement	0.38	2.82	3.20	0.56	2.86	3.42	0.46	3.00	3.46
Learning Education and Inclusion Total	0.00	2.30	2.30	0.00	1.53	1.53	1.73	1.53	3.25
Library Service	1.35	3.58	4.92	0.00	3.51	3.51	0.00	3.36	3.36
Adult Education	0.00	2.76	2.76	0.00	2.02	2.02	0.00	0.00	0.00
ESF Project Team	0	8.09	8.09	0.00	0	0.00	0.00	0.00	0.00
Admissions and Exclusions	0	0	0	0	7.79	7.79	0.00	16.06	16.06
Admin, Data and Information	0.23	2.83	3.06	0.00	2.27	2.27	0.82	2.36	3.17
Education Planning & Strategy Total									

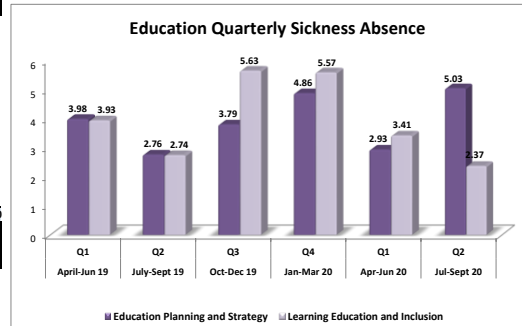
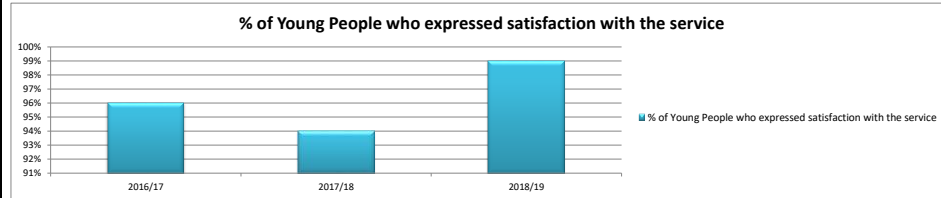
Q2 Monthly Breakdown	Jul-20			Aug-20			Sep-20		
	Short Term	Long Term	Overall %	Short Term	Long Term	Overall %	Short Term	Long Term	Overall %
% Sickness Absence	0.28	1.97	2.25	0.00	1.36	1.36	0.96	1.53	2.49
Inclusion & Additional Learning Needs	1.48	1.16	2.64	0.80	0.92	1.73	1.01	1.46	2.48
Early Years	2.27	2.26	4.97	0.51	2.06	2.57	2.60	1.95	4.55
Youth Services	0.00	1.21	1.21	0.00	0.00	0.00	0.00	1.81	1.81
School Improvement	1.05	1.70	2.75	0.33	1.20	1.53	1.61	1.62	2.78
Learning Education and Inclusion Total	2.55	3.97	6.52	0.29	6.17	6.46	0.98	6.06	7.04
Library Service	0.00	3.16	3.16	0.00	2.33	2.33	0.00	0	0.00
Adult Education	0.00	0.00	0.00	0.00	0.00	0.00	2.32	0.00	2.32
ESF Project Team	0.00	0.00	0.00	0.00	0.00	0.00	0.00	16.94	16.94
Admissions and Exclusions	0.00	15.41	15.41	0.00	15.36	15.36	0.00	16.52	16.52
Admin, Data and Information	1.22	3.44	4.65	0.14	4.39	4.51	0.98	4.94	5.92
Education Planning & Strategy Total									

% Sickness Absence	Quarter 1			Quarter 2		
	Short Term	Long Term	Overall %	Short Term	Long Term	Overall %
Primary Schools	0.12	1.58	1.70	0.73	0.98	1.70
Secondary Schools	0.19	1.06	1.25	0.61	0.71	1.33
Other 1	0.00	0.62	0.62	0.70	0.38	1.08
Other 2	0.59	3.24	3.83	0.47	1.16	1.63
Schools Total	0.16	1.45	1.61			

	Jul-Sept	Oct-Dec	Jan-Mar	Apr-Jun	July-Sept	Oct-Dec	Jan-Mar	Apr-Jun	Jul-Sept
	Q2	Q3	Q4	Q1	Q2	Q3	Q4	Q1	Q2
Education Planning and Strategy	4.2	5.3	3.94	3.98	2.76	3.79	4.86	2.93	5.03
Learning Education and Inclusion	4.19	5.5	5.46	3.93	2.74	5.63	5.57	3.41	2.37

Youth Services	2016/17	2017/18	2018/19
% of Young People who expressed satisfaction with the service	96%	94%	99%

Youth Services	2017/18 Result	2018/19 Target	2018/19 Result
Number of Young People achieving Local Accreditation	2800	700	2700
Number of Young People achieving National Accreditation	294	130	181
% of Young People who evidence progression in Key Skills attainment	93	60	95

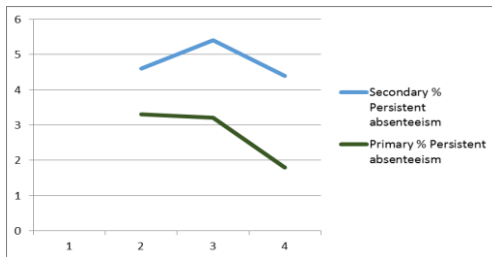
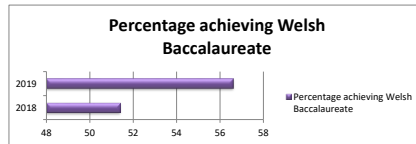
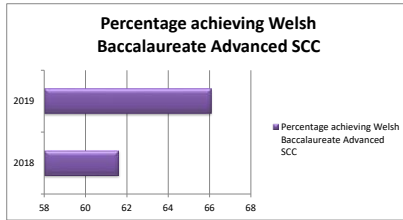
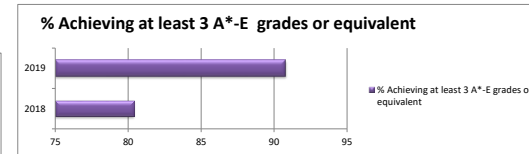
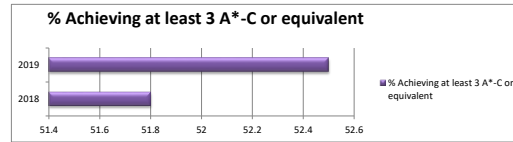
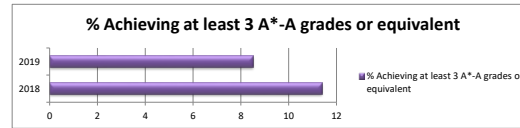
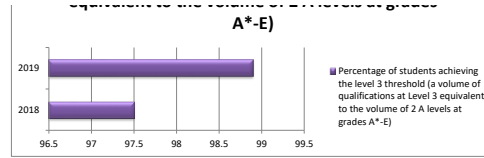


	Education		Schools		Education		Schools	
	Education	Schools	Education	Schools	Education	Schools	Education	Schools
Voluntary Leavers	3	25	11	71				
Other Leavers	1	12	1	50				
Total Leavers	4	37	12	121				
New Starters	3	16	10	84				
Number of Teacher Assistant Agency Staff	234	N/A	181	N/A				
Headcount	626	3338 = FTE 2504.78	623 = FTE 411.05	3311 = FTE 2480.56				
55 and over	163	607	165	597				
% of headcount	26.03%	18.18%	26.48%	18.03%				

** Data not available as Agency staff are employed directly by schools

Percentage of students achieving the level 3 threshold (a volume of qualifications at Level 3 equivalent to the volume of 2 A levels at grades

Percentage of students achieving the level 3 threshold (a volume of qualifications at Level 3 equivalent to the volume of 2 A levels at grades A*-E)	97.5	98.9
% Achieving at least 3 A*-E grades or equivalent	2018 80.4	2019 90.8
% Achieving at least 3 A*-C or equivalent	2018 51.8	2019 52.5
% Achieving at least 3 A*-A grades or equivalent	2018 11.4	2019 8.5
Percentage achieving Welsh Baccalaureate	2018 51.4	2019 56.6
Percentage achieving Welsh Baccalaureate Advanced SCC	2018 61.6	2019 66.1



Education & Schools Workforce Information		
Quarter 1 2019/20		
	Education	Schools
Voluntary Leavers	7	34
Involuntary Leavers	0	15
Total Leavers	7	49
New Entrants	8	36
Headcount	653	3410
55 and over	169	585
% of headcount	26.00%	17.20%
Agency	250*	**

* 182 teaching assistance employed by inclusion
9 music teachers
59 community tutors
** Directly employed by schools, no number available